



DC-3 Airways World Rally 2010 – Flight one briefing.

The first World Rally flight begins at Zelienople Municipal Airport in Zelienople, Pennsylvania, USA, and concludes at Washington National Airport in Washington, D.C. The distance is about 196nm and flight time is about one hour and twenty-five minutes.

The early stages of this flight provide DC-3 pilots, both new and experienced, the opportunity to brush-up their NDB navigation skills while honing their ability to accurately get their DC-3 from point A to point B in the presence of cross winds. A few altitude and speed changes are also thrown in. The final approach for landing, though, is the Coup de Gras. That would be the River Visual Approach to Runway 19 of KDCA. That approach follows the Potomac River and is sufficiently complicated to require an Approach Plate. Yes, an Approach Plate for a VFR approach! That's a clue of the fun to be expected. That Approach Plate is included in this package, as well as a section on flying the DC-3 "by the numbers" for newcomers or those who have become a bit "rusty."

To begin the flight in FS9, from the Main Menu go to... Select a Flight / 1.Choose a Category / 2.Choose a flight, and select WR2010-01.

To begin the flight in FSX, from the opening screen select Free Flights, and in the sub menu located above the aircraft image select ... Load / Title and select WR2010-01. To begin the flight when FSX is already open, click Flights/Load and in the Category window select My Saved Flights. In the Title window select WR2010-01 and click Fly Now.

You will be placed at Gate 3 at Zelienople in the default Cessna 172. You now have to change aircraft to your chosen DC-3 and prepare for flight. The minimum suggested fuel load is 280 US gallons (1,680 Lbs).

Enjoy the flight

WR2010 – 01. Zelienople, Pennsylvania, USA (8G7) to Washington, D.C. (KDCA)

Warning this flight was created using Microsoft default scenery. The use of add-on scenery may require an amendment to cruise heights on some flight sections.

From – To The symbol \pm indicates an approximate course.

Dep. Rwy: 17

Init. Hdg: 155deg

Init. Alt: 5,500ft

Apt Elev: 902ft

Course (Leg) Deg	Distance (Leg) nm	ETE (leg) HH+MM
------------------------	-------------------------	-----------------------

Departure:

Tune ADF-1 to 287.0 kHz, Nav-1 to 111.00 MHz, and set the Nav-1 OBS to 148deg

Zelienople
(8G7)
Penna

Your aircraft is parked at Gate 3 at Zelienople Municipal Airport. Set the DC-3 Mixture to "Auto Rich." Taxi straight ahead, crossing Rwy 17/35 and turn right onto the taxiway. Taxi to the end, staying at 20 kts or below, and turn right onto Rwy 17. Lock your tail-wheel and set pitch trim to +3°. Start your flight timer (or relax and let your Goodrick Timer automatically start when reaching 35 kts).

To

Washington
(KDCA)
D.C.

If thoughts of taxiing a DC-3 make you ill, although taxiing is a lot of fun, you may directly move your aircraft to the departure end of Rwy 17 and start your flight there. (An old adage states "If you can taxi a DC-3 to the end of the Runway, you can fly it!")

To Fix 01: After take off maintain runway heading and climb to waypoint at 2,000ft MSL.....

173

1.3

00+01

To MKP NDB (287.0): After takeoff turn to course 155deg. (Be sure to apply your calculated Wind Correction Angle to your heading to maintain a 155° course.) Commence climb to 5,500ft MSL. Unlock your tail-wheel. Fly Direct to NDB. At 5500 ft change the DC-3 mixture to "Auto Lean."

WCA =

154

30.9

00+13

En-route:

To CBE NDB (317.0): Turn left to course 140deg. Fly 140deg outbound course from MKP NDB (ADF Gauge will point to 320deg.) After 10 minutes, tune ADF-1 to CBE NDB (317.0). Adjust heading, if necessary, to fly 140deg course direct to the NDB. **WCA =**

140

63.7

00+25

To TZ NDB (364.0): Turn right to course 145deg. Fly 145deg outbound course from CBE NDB (ADF Gauge will point to 325deg.) After 10 minutes, tune ADF-1 to TZ NDB (364.0). Adjust heading, if necessary, to fly 145deg course direct to the NDB. **WCA =**

145

46.1

00+18

To Leesburg Airport (KJYO)(Fix01): Turn left to course 100deg. Fly 100deg outbound course from TZ NDB (ADF Gauge will point to 280deg). After 4 minutes, begin 500 fpm descent to 4000 ft. You will overfly Leesburg airport which is at DME 27.6 from the DCA VOR (111.00). Set NAV-1 OBS to 148deg. **WCA =**

100 23.8 00+10

To Fix02 (Intercept of the 148deg radial to DCA VOR, 111.00): Turn right to course 110deg and descend to 3000 ft, then slow to 105 kts. Lower flaps to the 1/4 position (one notch) when passing through 130 kts IAS. Intercept the 148deg radial to DCA VOR (111.00) DME should read 13.7.

WCA =

110 15.6 00+08

To Fix03: Turn right to course 148deg and track the DCA 148deg radial to the 10 DME point.....

148 3.7 00+02

NOTE: It is advisable to pause your simulator at this point and save your flight. Then record your flight time and remaining fuel. Then, if you wish, you can repeat the River Visual Rwy 19 approach and need only add the short time and fuel consumption of that last leg to those recorded times and fuel consumption numbers accumulated at the 10 DME point.

Approach:

From the 10 DME point on the DCA 148deg radial, proceed to Washington National's Rwy 19 following the procedures of attached Approach Plate "River Visual Rwy 19" Carefully note the recommended altitudes vs DME distance from DCA VOR (111.00). Maintain 105 kts and about a 500 fpm rate of descent will keep you in pretty good shape. Stay on the centreline of the Potomac River during this approach until it's time to turn right to land on Rwy 19. Be very certain to avoid Prohibited area P-56 clearly marked on the approach plate.

9.0 00+06

To Runway: Go to landing configuration at about 2.0 DME. Turn right to line up with Rwy 19 after passing the last bridge and then land visually.....

2.0 00+02

**Land: Washington National
Rwy 19**

Length: 6,869ft

Width: 150ft

Surface: Asphalt

Flight: 01

Arrival Airport Elev: 13ft

Estimated totals for this flight >>>

196nm 01+25

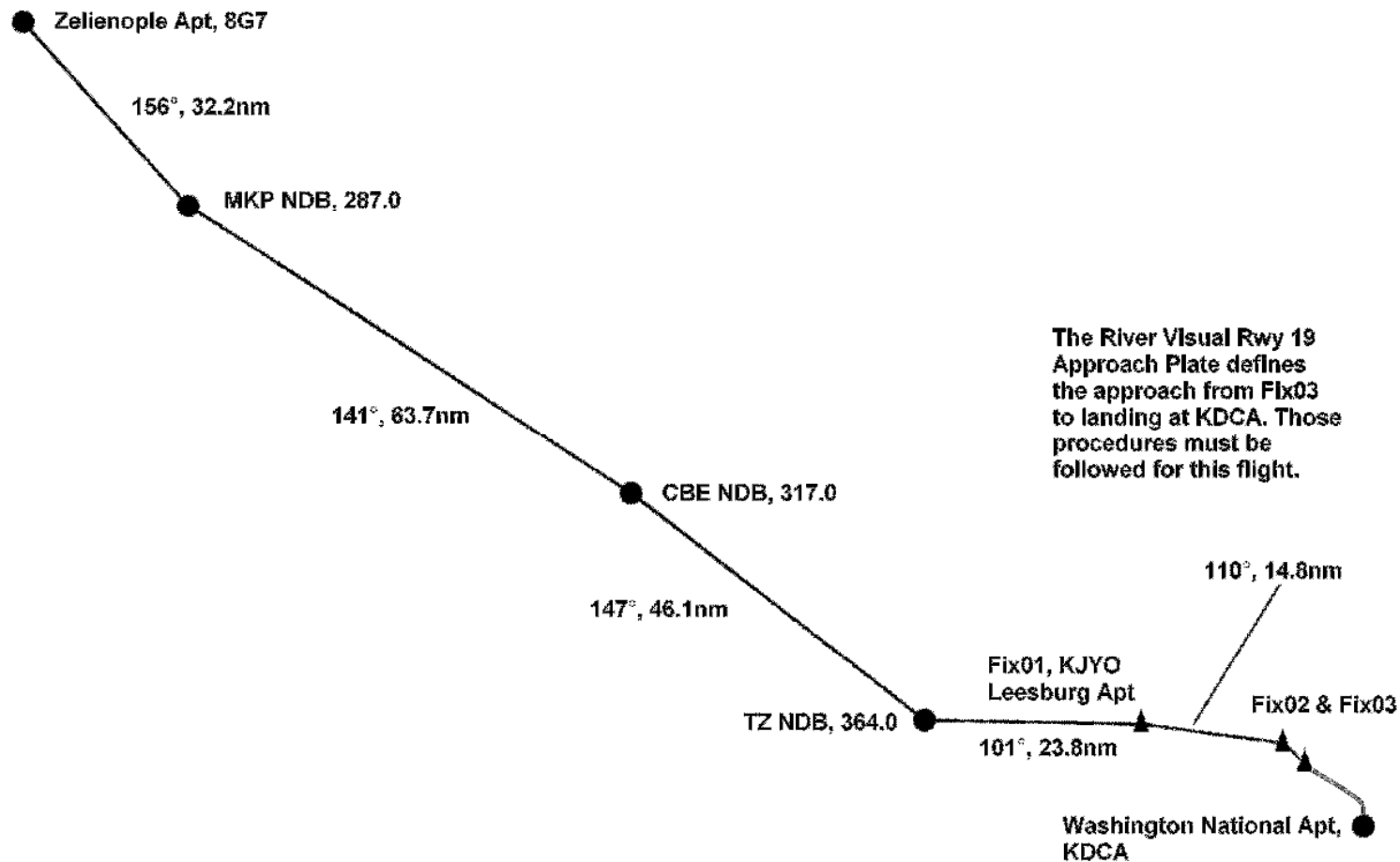
Addon Scenery

Two excellent scenery files are available for fs9 pilots.

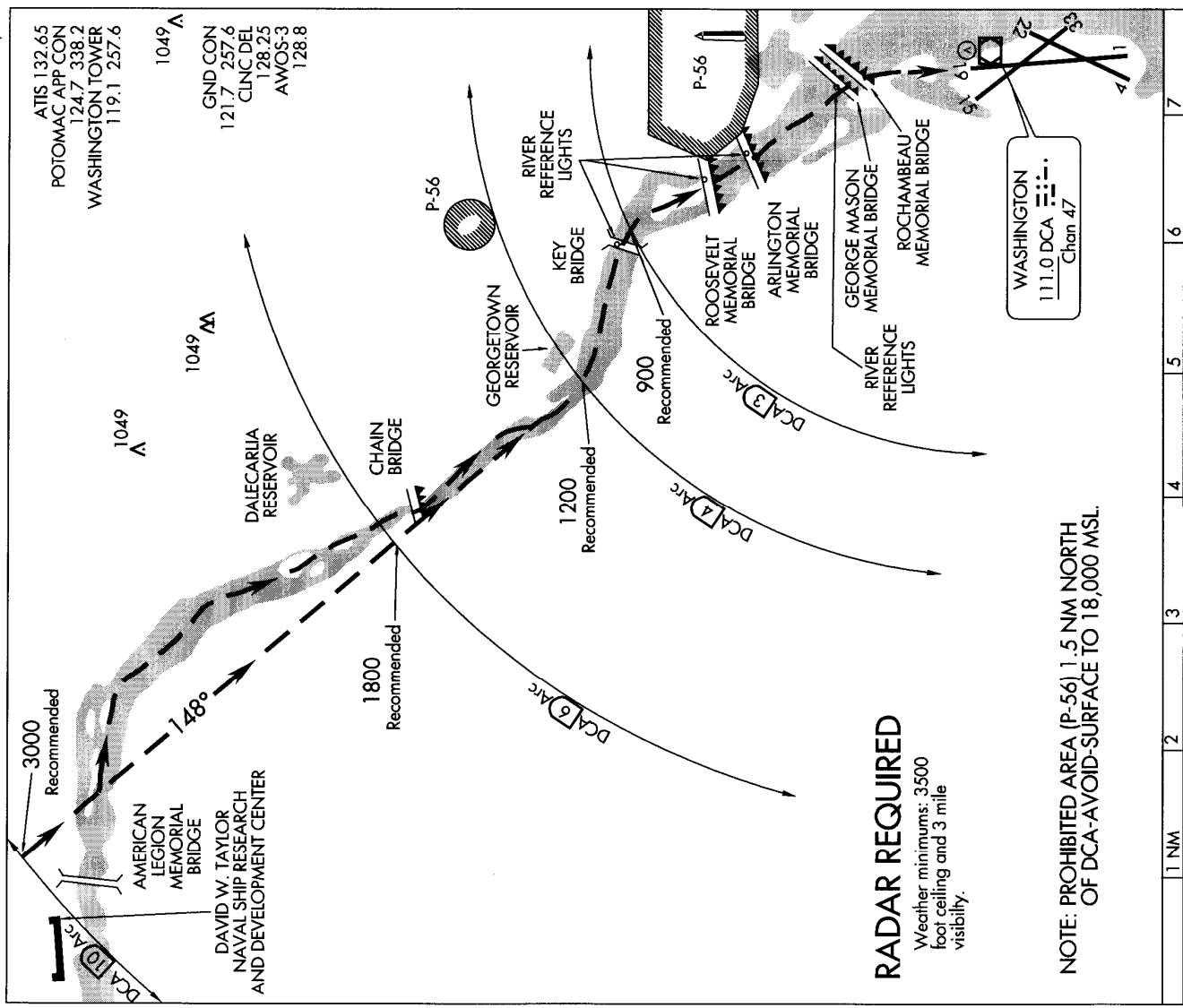
Washington D.C. Metro Area ... add more prominent buildings to the Washington DC area that were missing from the default scenery. Filename: washdc-1.zip, 154.7 Mb. FlightSim.com and AVSIM.com. by Larry Robbins

Washington DC National Mall Update ... add more prominent buildings to the Washington DC area that were missing from the default scenery. Filename: natmall.zip, 55.4 Mb. FlightSim.com and AVSIM.com. by Larry Robbins

Zelienople, Pennsylvania, USA (8G7) to Washington National Airport (KDCA) ... FSX



RIVER VISUAL RWY 19 WASHINGTON/ RONALD REAGAN WASHINGTON NATIONAL (DCA) WASHINGTON, DC



NOTE: Clearance for visual approach does not authorize penetration of P-56.

For Flight Simulator Navigation ONLY

RIVER VISUAL RWY 19 38°51'N-77°02'W
WASHINGTON, DC
WASHINGTON/ RONALD REAGAN WASHINGTON NATIONAL (DCA)